

**SAILING INSTRUCTIONS**

Saturday, July 7	Coaches meeting.9.30 Races. Prize Giving and Closing Ceremony.
Sunday, July 8	Official Departure Day.

- 8.2 In total 12 races are scheduled, with up to 3 races to be sailed each day.
- 8.3 One extra race per day may be sailed, provided that the change is made according to instruction 4.
- 8.4 The scheduled time of the coaches meeting each day is 9.30 hours. Meetings will take place in meeting room in the Race office
- 8.5 The scheduled time of the warning signal for the first race each day is 12.00 hours, except that the warning signal for the practice race will be at 14.00 hours.
- 8.6 To alert boats that a race or sequence of races will begin soon, the orange flag defining the starboard end of the starting line will be displayed with one sound at least four minutes before a warning signal is displayed.
- 8.7 On the last day of racing, no warning signal will be made after 15.00 hours.

9 CLASS FLAGS

- 9.1 Boys: For each start, the Class Flag will be a rectangle of the colour of the fleet to be started.
- 9.2 Girls: For each start, the Class Flag will be a rectangle of the colour of the fleet to be started with a black rhombus on it.

10 RACING AREA

Attachment 1 shows the location of the racing area.

11 THE COURSE

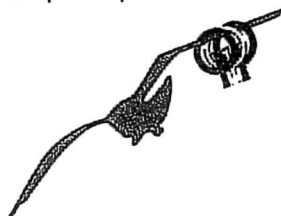
The diagram in Attachment 2 shows the course, including the approximate angles between legs, the order in which marks are to be passed, and the side on which each mark is to be left.

12 MARKS

- 12.1 Mark 1, 2, 3B and 3E will be yellow orange cylindrical buoys.
- 12.2 New marks, as provided in instruction 14.1, will be orange cylindrical buoys.
- 12.3 The starting and finishing marks will be race committee boats.
- 12.4 A race committee boat signalling a change of a leg of the course is a mark as provided in instruction 14.2.
- 12.5 In case that one mark of the gate is missing the competitors have to leave the remaining mark to Port side.

13 THE START

- 13.1 The starting line will be between staffs displaying orange flags on the starting marks.
- 13.2 When an individual recall is made, flag X will be displayed for up to 2 minutes. This changes rule 29.1.





SAILING INSTRUCTIONS

- 13.3 When the warning signal for the first fleet has been made, boats from other fleets shall be in the waiting area. Boats may approach the starting line after the starting signal of the previous fleet and, in case of an individual recall, after the X flag has been removed.
- 13.4 Boats that have finished shall return directly to the waiting area or ashore, keeping well clear of all boats racing and of all boats whose warning signal has been made.
- 13.5 The waiting area windward boundary will be designated by white rounded marks.
- 13.6 A boat starting later than 4 minutes after her starting signal will be scored Did Not Start without a hearing. This changes rules A4 and A5.

14 CHANGE OF THE NEXT LEG OF THE COURSE

- 14.1 To change the next leg of the course, the race committee will lay a new mark (or move the finishing line) and remove the original mark as soon as practicable.
- 14.2 Except at a gate, boats shall pass between the race committee boat signalling the change of course and the nearby mark, leaving the mark to port and the race committee boat to starboard. This changes rule 28.1.

15 THE FINISH

The finishing line will be between staffs displaying orange flags on the finishing marks.

16 PENALTY SYSTEM

- 16.1 A boat that has taken a penalty or retired according to rule 44.1 shall complete an acknowledgement form at the Race Office within the protest time limit.
- 16.2 The penalty for breaches of Class Rules, Sailing Instructions 2, 5.1, 5.2, 7.6, 13.3, 13.4, 16.1, 20.1, 21, 22, 24, 25, 26 and Notice of Race 16.3 may be less than disqualification if the jury so decides. The scoring abbreviation for a discretionary penalty imposed under this instruction will be DPI.
- 16.3 Appendix P will apply.

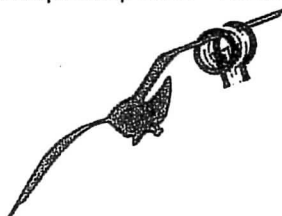
17 TIME LIMITS AND TARGET TIMES

- 17.1 Time limits and target times are as follows:

TIME LIMIT	MARK 1 TIME LIMIT	TARGET TIME
90 minutes	30 minutes	50 minutes

- 17.2 If no boat has passed Mark 1 within the Mark 1 time limit the race will be abandoned. Failure to meet the target time will not be grounds for redress. This changes rule 62.1(a).
- 17.3 Boats failing to finish within 20 minutes after the first boat sails the course and finishes will be scored Did Not Finish without a hearing. This changes rules 35, A4 and A5.

18 PROTESTS AND REQUESTS FOR REDRESS





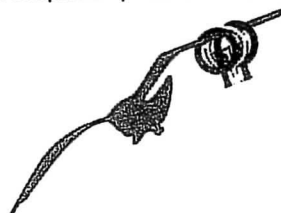
SAILING INSTRUCTIONS

- 18.1 To inform the race committee of the boat/s being protested, the boat intending to protest shall approach the race committee boat at the starboard end of the finishing line immediately after finishing and shall hail the protested boat's sail number/s while sailing along her starboard side.
- 18.2 Protest forms are available at the Race Office. Protests and requests for redress or reopening shall be delivered there within the appropriate time limit.
- 18.3 The protest time limit is 80 minutes after the last boat has finished the last race of the day or the race committee signals no more racing today, whichever is later.
- 18.4 Notices will be posted within 30 minutes of the protest time limit to inform competitors of hearings in which they are parties or named as witnesses. Hearings will be held in the jury room, located in race office. No protest hearing will start after 2100 hours.
- 18.5 Notices of protests by the race committee or jury will be posted to inform boats under rule 61.1(b).
- 18.6 A list of boats that under instruction 16.3, have been penalized for breaking rule 42 will be posted.
- 18.7 For the purpose of measurement protests as per rule 64.3 (b), the 'authority responsible' is the IODA Technical Committee representative.
- 18.8 Breaches of instructions 2, 7.6, 16.1, 20.1, 22, 24, 25, 26 and 29 will not be grounds for a protest by a boat. This changes rule 60.1(a).
- 18.9 On the last scheduled day of racing a request for reopening a hearing shall be delivered (this changes rule 66):
- (a) within the protest time limit if the party requesting reopening was informed of the decision on the previous day;
 - (b) no later than 30 minutes after the party requesting reopening was informed of the decision on that day.
- 18.10 Decisions of the jury are final as provided in rule 70.5.

19 SCORING

- 19.1 Race scores
- (a) Rule A4.2 is changed so that the scores are based on the number of boats assigned to the largest fleet.
 - (b) If at the end of the last day of races some boats have more race scores than others, scores for the most recent races will be excluded so that all boats have the same number of race scores.
- 19.2 Series scores
- (a) 5 races are required to be completed by each fleet to constitute a series.
 - (b) When fewer than 6 races have been completed, a boat's series score will be the total of her race scores.
 - (c) When 6 or more races have been completed, a boat's series score will be the total of her race scores excluding her worst score.
- 19.3 To request correction of an alleged error in the posted races or series results, a boat shall complete a scoring enquiry form available at the Race Office.

20 SAFETY REGULATIONS





IODA EUROPEAN CHAMPIONSHIP 2012

Lignano Sabbiadoro, ITALY

June 30 to July 8, 2012



SAILING INSTRUCTIONS

- 20.1 A boat retiring from a race shall notify a race committee or safety boat before leaving the course and shall complete the relevant form available at the Race Office.
- 20.2 Each day of competition the Coaches or Team Leaders shall notify the Race Office before D flag is displayed, of the boats not intending to race that day.
- 20.3 When code flag B is displayed ashore each Coach or Team Leader shall sign a checklist adjacent to registration room within 45 minutes after the flag has been displayed, to indicate that all team members have returned to shore. Flag B will be displayed when the last boat has finished the last race of the day or the race is abandoned. All team members may be penalised at the discretion of the jury for each race of the day on which the Coach or Team Leader failed to comply with this instruction. This changes rule 63.1.
- 20.4 Competitors who require assistance shall blow a whistle or wave the paddle or one arm. The race committee reserves the right to assist competitors who in their opinion require assistance, regardless of the wishes of the competitor. This will not be grounds for redress. This changes rule 62.1(a).

21 REPLACEMENT OF EQUIPMENT

- 21.1 Substitution of damaged or lost equipment will not be allowed unless approved in writing by the race committee. Requests for substitution shall be made to the race committee at the first reasonable opportunity.
- 21.2 Substitution of damaged equipment may be permitted provided that the relevant form has been completed at the Race Office and both the damaged and the substituting equipment has been inspected by the Measurement Sub-Committee.
- 21.3 If the substitution was made on the water between races, both the damaged and the substituting equipment shall be presented to the Measurement Sub-Committee after the end of the day's racing. The substitution is subject to the approval of the race committee given retrospectively.

22 EQUIPMENT AND MEASUREMENT CHECKS

- 22.1 A boat or equipment may be inspected at any time for compliance with the Class Rules, the Notice of Race or the Sailing Instructions. The top ten finishing boats of every race shall sail to the Equipment Inspector boat at the starboard side of the finishing line. No adjustments shall be made on the boat before the measurement inspection.
- 22.2 Sail measuring to the maximum limits while scrutineered during the measurement days may be scrutineered during the event

23 OFFICIAL AND ACCREDITED BOATS

- 23.1 Official boats will be identified as follows:

BOAT

FLAG





SAILING INSTRUCTIONS

Race committee signals vessel	White flag with red 'RC'
Race committee boats	White flag with red 'RC'
Jury Boats	White flag with black 'J'
Rescue Boats	Yellow flag
Equipment Inspector Boats	White flag with black 'M'
Support boats	White flag with black National Letters

23.2 Accredited boats will be identified as follows:

Press	Green flag
Spectators and VIP boats	Pink flag

24 SUPPORT BOATS

- 24.1 Team Leaders, Coaches and other support personnel shall stay outside areas where boats are or will be racing from the time the orange flag is displayed until all boats of all divisions in that race have finished or the race committee signals a postponement or abandonment. To observe a race, support boats may move from leeward to windward through the port side of the course keeping well clear of the exclusion boundary, approximately 100 metres from the course area. Support boats may, after the last start of a race, move between the waiting and the finishing areas through the centre channel. (See drawing in Attachment 2). When a race committee or jury member indicates a support boat to move further from the course area, the mentioned boat shall do so immediately.
- 24.2 All boats associated with the infringing support boat may be penalised at the discretion of the jury for the race on which the support personnel failed to comply with Notice of Race 15 and/or with this instruction. This changes rule 63.1
- 24.3 Competitors shall not approach any boat other than an official boat (see instruction 23.1) from their first warning signal of the day until they finish their last race for the day or the race committee signals no more racing today, whichever is later.
- 24.4 Coaches shall carry a working VHF radio.

25 TRASH DISPOSAL

Boats shall not put trash in the water. Trash may be placed aboard support and race committee boats.

26 BERTHING

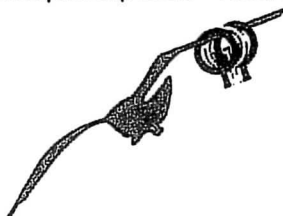
Boats shall be kept in their assigned places in the boat park.

27 PRIZES

Prizes will be awarded in accordance with the Notice of Race.

28 DISCLAIMER OF LIABILITY

- 28.1 Competitors participate in the regatta entirely at their own risk and responsibility. See rule 4, 'Decision to Race'. The Organising Authority and any other party involved in the organisation of the Championship will accept no liability whatsoever for any





IODA EUROPEAN CHAMPIONSHIP 2012

Lignano Sabbiadoro, ITALY

June 30 to July 8, 2012



SAILING INSTRUCTIONS

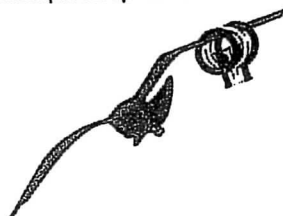
injury, damage, loss or claim, whether personal or material, incurred by or inflicted to participants before, during or after the Championship.

29 INSURANCE

Each competitor shall be insured with valid third-party liability insurance, covering up to EUR 300,000 per event.

30 RIGHT TO USE NAMES AND LIKENESS

In participating in this championship, a competitor automatically grants to the organising authority, the IODA and the sponsors of the championship the right in perpetuity to make, use and show at their discretion any motion pictures, still pictures and live, taped or filmed television and other reproductions of him or her during the championship, and of all of his or her material related to the championship, without compensation.





IODA EUROPEAN CHAMPIONSHIP 2012

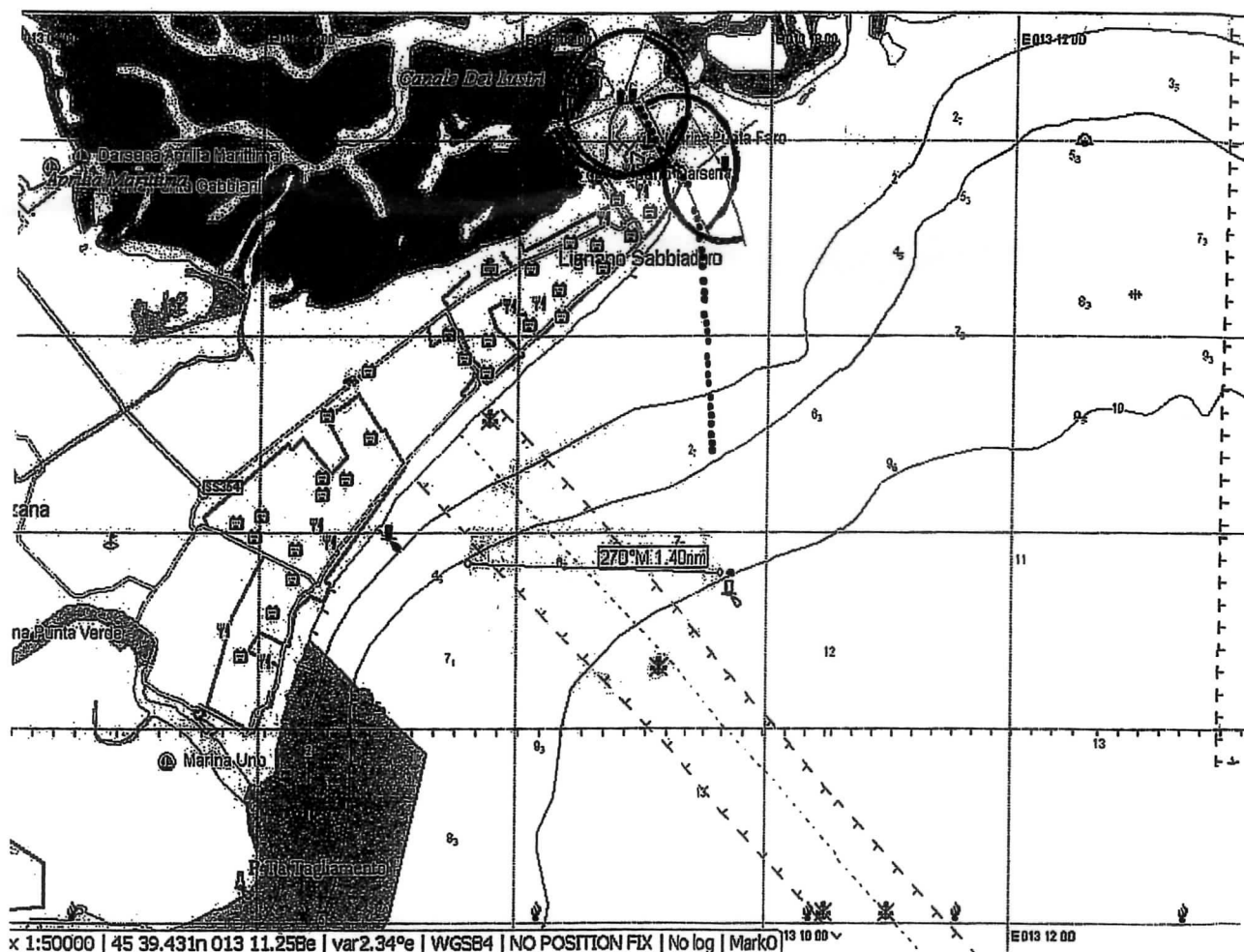
Lignano Sabbiadoro, ITALY

June 30 to July 8, 2012



SAILING INSTRUCTIONS

ATTACHMENT 1: RACING AREAS



REGIONE AUTONOMA
FRIULI VENEZIA GIULIA





IODA EUROPEAN CHAMPIONSHIP 2012

Lignano Sabbiadoro, ITALY

June 30 to July 8, 2012



SAILING INSTRUCTIONS

ATTACHMENT 2: THE COURSE

